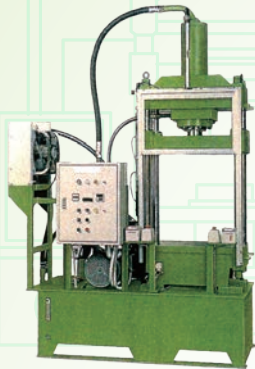


# CASTPLAY TRIMMING PRESS TRIMMING PRESS REPLACEMENT DIES



## PRODUCT GUIDE



BHP600-50TA



BHWP600-50TA

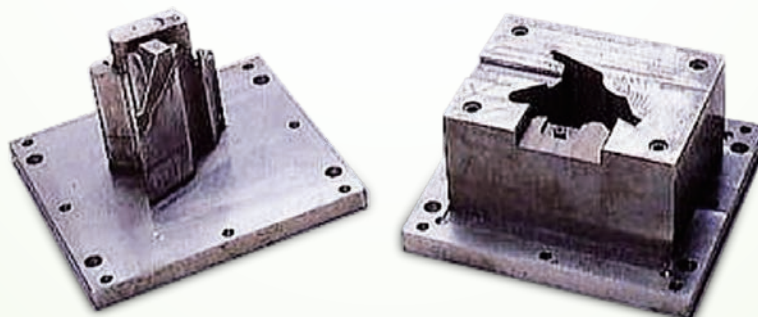


BHWP600-100TA



BHP600-100TA

A perfect finish, for improved  
precision and reliability.



From years of experience and thorough research  
a perfect finish is achieved every time.  
Maintenance of used and other manufacturers dies.

# A cycle speed that outstrips the rest.



- ▶ Compact built-in design.
- ▶ Low price and high performance with a full range of functions.



- ▶ Die changeover table (with stockyard) is standard equipment.



- ▶ Increased trimming capabilities for larger castings.
- ▶ Wide table for adaptability for other makers dies.



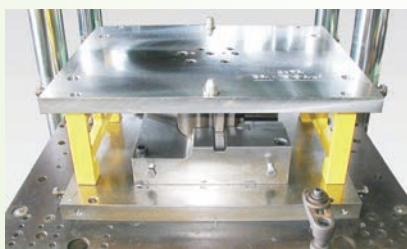
- ▶ Die changeover table (with stockyard) is standard equipment.

MODEL		BHP600-50TA	BHP600-50TA	BHP600-100TA	BHP600-100TA
OUTPUT		Max. 50 Metric Tons	Max. 50 Metric Tons	Max. 100 Metric Tons	Max. 100 Metric Tons
MOTOR		7.5 kW	7.5 kW	22kW	22kW
HYDRAULIC PUMP (PRESSURE)		Variable Capacity Piston Pump (10 MPa Under Normal Operation)	Variable Capacity Piston Pump (10 MPa Under Normal Operation)	Variable Capacity Piston Pump (10 MPa Under Normal Operation)	Variable Capacity Piston Pump (10 MPa Under Normal Operation)
HYDRAULIC TANK CAPACITY		300L (Thermal Switch, Oil Cooler are standard equipment.)	300L (Thermal Switch, Oil Cooler are standard equipment.)	495L (Thermal Switch, Oil Cooler are standard equipment.)	495L (Thermal Switch, Oil Cooler are standard equipment.)
MAIN CYLINDER STROKE		600mm	600mm	600mm	600mm
APERTURE DIMENSIONS		W 650 × H 750 × D 400 (mm)	W 650 × H 750 × D 400 (mm)	W 700 × H 1000 × D 650 (mm)	W 700 × H 1000 × D 650 (mm)
SPEED	LOWERING	70mm / sec.	70mm / sec.	70mm / sec. (60Hz) 55mm / sec. (50Hz)	70mm / sec. (60Hz) 55mm / sec. (50Hz)
	RAISING	125mm / sec.	125mm / sec.	125mm / sec. (60Hz)	125mm / sec. (60Hz)
SLIDE STROKE		N/A	400mm	--	650mm
CYCLE TIME		6 sec. (60Hz) 7.8 sec. (50Hz)	9 sec. (60Hz) 11.5 sec. (50Hz)	6 sec. (60Hz) 7.5 sec. (50Hz)	10.5 sec. (60Hz) 13 sec. (50Hz)
OPTION		Automatic clamps (upper and lower) / Automatic die changeover device (upper and lower) / Die changeover table / Die set / Loading Unloading device / Safety fence / Area sensor ※All safety doors are standard equipment. ※Ask about changes or additions to these specifications.			

DIMENSIONS	BHP600-50TA	BHP600-50TA	BHP600-100TA	BHP600-100TA

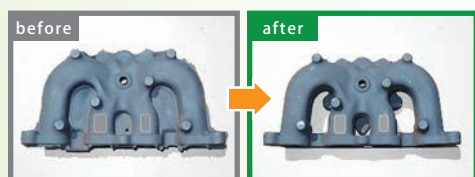
## TRIMMING PRESS REPLACEMENT DIES

### Quick solutions to high level and diversified deburring demands.



Dies can be used for a wide range of products (FC, FCD etc.).  
Modification and adjustment of dies achieved by precise machining work.  
Data storage of original dies makes manufacturing of duplicates possible.  
Replacement dies for other manufacturers dies is also possible by measuring products using the 3D Co-ordinate Measuring Machine.

All types of dies accommodated, from punch and through to hold and punch types, from one block to separate dies. Also, blades can be replaced quickly, should gouging and machining errors occur.  
Advice and estimates available-just send us a sample!



Holes are punched and trimmed from all sides in one single shot.



Separation of pouring basin, cup, etc. and deburring performed simultaneously.



Inspection and quality process is included during trimming, punching and deburring operations.

※For the above samples, Punch and Drop Operation (product is discharged) and Trim and Drop Operation (burr, waste etc is discharged) are both possible.  
In this case (a standard pump was used), approx. shot time is as follows; Punch and Drop Operation = 10 sec. / shot Trim and Drop Operation = 15 sec. / shot  
These times can be increased/ decreased depending on motor, pump sizes etc.



**Head Office**  
5-3 Bouyama, Hatsuka-cho,  
Nishio, Aichi 444-0316 JAPAN  
Tel: +81 563-59-1133 Fax: +81 563-59-1104

**Kira Plant**  
29 Nanatsuyama, Shimoyokosuka, Kira-cho, Nishio, Aichi  
444-0522 JAPAN  
Tel: +81 563-34-8080 Fax: +81 563-34-8081